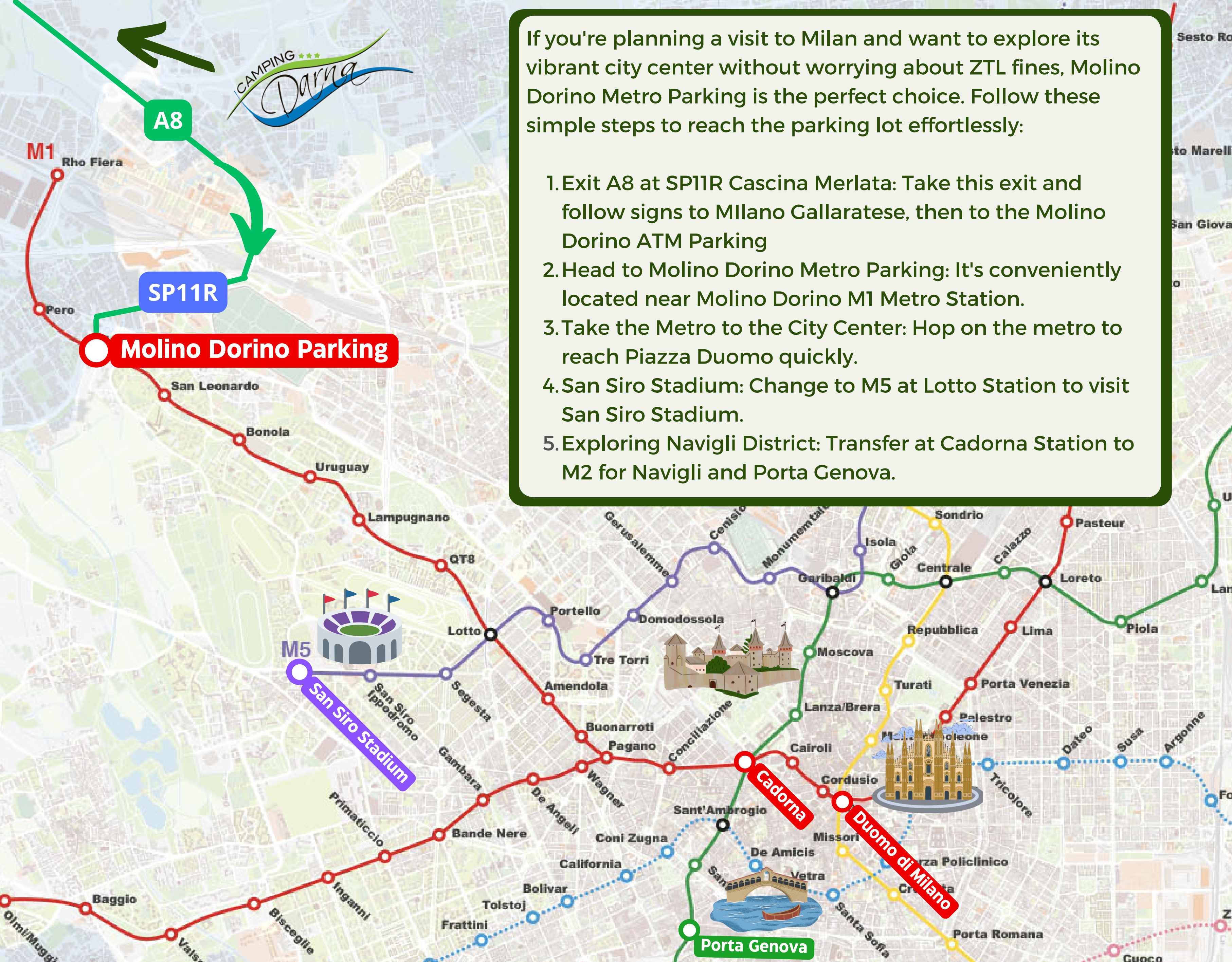




If you're planning a visit to Milan and want to explore its vibrant city center without worrying about ZTL fines, Molino Dorino Metro Parking is the perfect choice. Follow these simple steps to reach the parking lot effortlessly:

1. Exit A8 at SP11R Cascina Merlata: Take this exit and follow signs to Milano Gallarate, then to the Molino Dorino ATM Parking
2. Head to Molino Dorino Metro Parking: It's conveniently located near Molino Dorino M1 Metro Station.
3. Take the Metro to the City Center: Hop on the metro to reach Piazza Duomo quickly.
4. San Siro Stadium: Change to M5 at Lotto Station to visit San Siro Stadium.
5. Exploring Navigli District: Transfer at Cadorna Station to M2 for Navigli and Porta Genova.



Molino Dorino Parking

M5 San Siro Stadium

Cadorna

Duomo di Milano

Porta Genova